



GAT MONTHLY MEMBERSHIP PROGRESS REPORT

Results as of: 4/30/2022

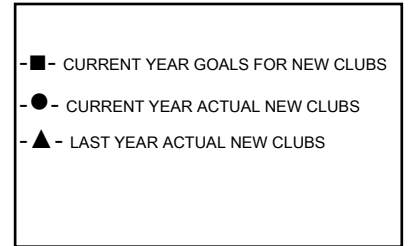
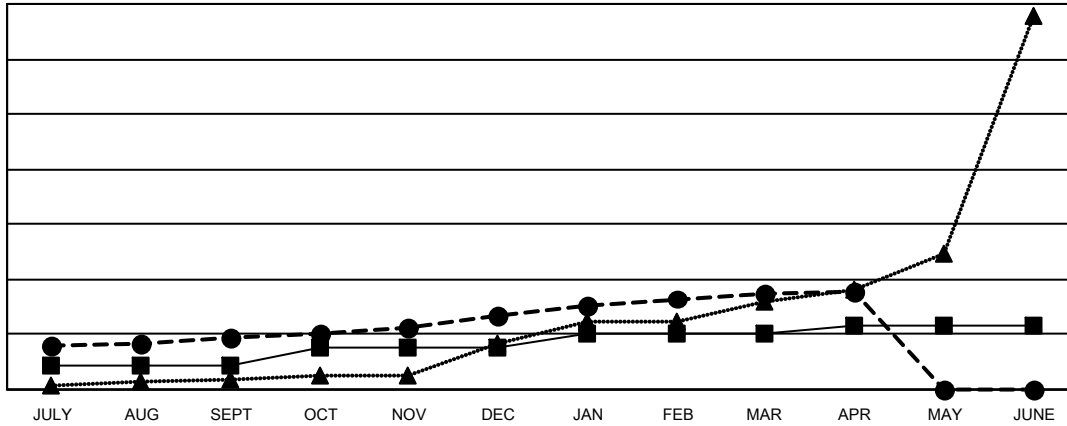
Multiple District 3232

LOCATION: INDIA

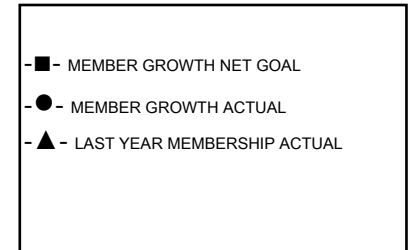
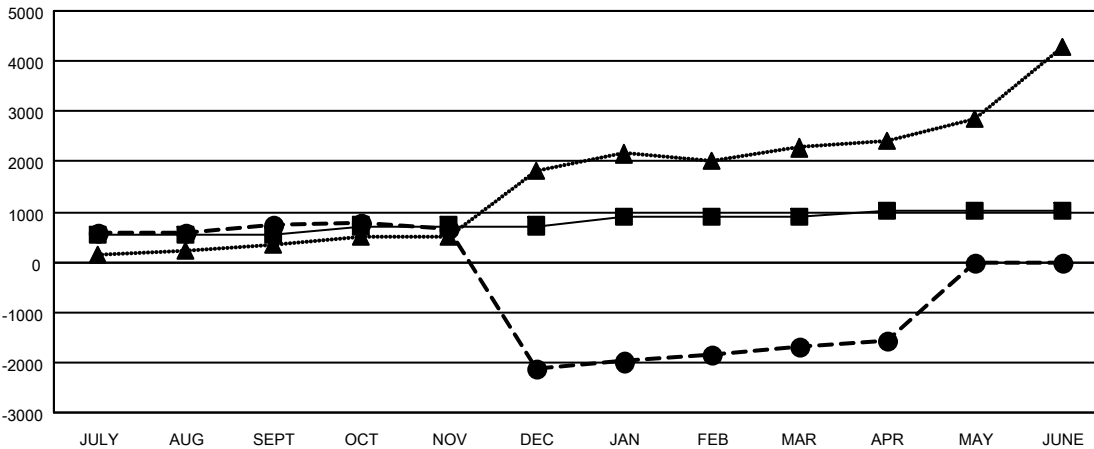
| Clubs | | | |
|-----------------------|---------------|-----------|---------------|
| RESULTS FOR 2021-2022 | | | |
| QUARTER | NEW CLUB GOAL | NEW CLUBS | DROPPED CLUBS |
| JULY/AUG/SEPT | 18 | 38 | 14 |
| OCT/NOV/DEC | 12 | 15 | 13 |
| JAN/FEB/MAR | 11 | 16 | 13 |
| APR/MAY/JUNE | 5 | 2 | 0 |

| Members | | | |
|-----------------------|------------------------|----------------------|----------------------------------------------|
| RESULTS FOR 2021-2022 | | | |
| QUARTER | MEMBER GROWTH NET GOAL | MEMBER GROWTH ACTUAL | DROPPED MEMBERS ACTUAL (including transfers) |
| JULY/AUG/SEPT | 545 | 1,276 | 479 |
| OCT/NOV/DEC | 175 | 921 | 3,776 |
| JAN/FEB/MAR | 170 | 942 | 459 |
| APR/MAY/JUNE | 125 | 192 | 65 |

GOALS AND ACTUAL NEW CLUBS CUMULATIVE



GOALS AND ACTUAL MEMBERS CUMULATIVE



| | | |
|------------------------|-----------------------------------------------------------|-----------------------------------------|
| DROPPED CLUBS: 40 | 297 CLUBS OF 656 ADDED 1 OR MORE NEW MEMBERS | GENDER DISTRIBUTION |
| DROPPED MEMBERS | CLICK HERE FOR CUMULATIVE MEMBERSHIP DATA | MALE 11,402 (63.60%) |
| DECEASED 43 | | FEMALE 6,526 (36.40%) |
| CLUB CANCELLED 373 | | NON BINARY 0 (0.00%) |
| OTHER 4,362 | | PREFER NOT TO ANSWER 1 (0.01%) |
| TOTAL 4,778 | | TOTAL FAMILY UNIT MEMBERS 13,260 |
| | | FAMILY MEMBERS PAYING HALF DUES 9,184 |